



GREENWICH PENINSULA

RENTING REFINED

Nº4 UPPER RIVERSIDE

AVAILABLE FROM MARCH 2020



1 BED, LIVING

URBAN LIVING REIMAGINED

No.4 is what renting in London should be.
It offers all the perks of homeownership,
but with a flexibility tailored to you.

SHOW ME MORE



3 BED, LIVING



HOW WE'RE REINVENTING RENTING



Residents' Members Club

A pool, a gym, a rooftop terrace and a cinema screen will all become part of your day-to-day experience.



Managed by Greenwich Peninsula

We'll make sure your home is managed properly and any bumps are smoothed before you know it. And with our flexible contracts, you're bound to find the right fit for you.



Pets Allowed

We know a flat isn't a home without your pet, but renting at No.4 means they're as welcome as you are.



Estate Management

The estate is cared for by Greenwich Peninsula. This means your local surroundings are clean and cared for.



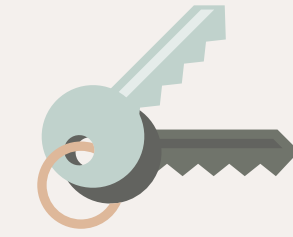
Deposit-Free Renting

No. 4 offers you the option to pay a smaller amount upfront and reduce both the costs and stress of moving in, thanks to the Deposit Replacement Scheme. Terms apply.



Security of Contract

No.4 will always be a Greenwich Peninsula rental offer meaning your contract is secure. Whereas a private landlord may decide to end the contract at any time.



Parking

The No.4 lifestyle extends beyond the block itself. It also means having the freedom to go where you please – and with our onsite parking, you can hit the road whenever you like.





NO.4 UPPER RIVERSIDE, LOBBY

RENTING REIMAGINED

All the Essentials

Dedicated property manager
Online application form
Flexible contracts
Deposit replacement scheme

The Club Membership

Rooftop terrace
Cinemas
Co-working space
Swimming Pool
Gym
Dining room
Community and
social events

Helping Hand

Concierge
Lifestyle manager
Residents' portal
Estate security
Annual spring clean



ABOVE THE CLUB, POOL
RIGHT THE CLUB, GYM



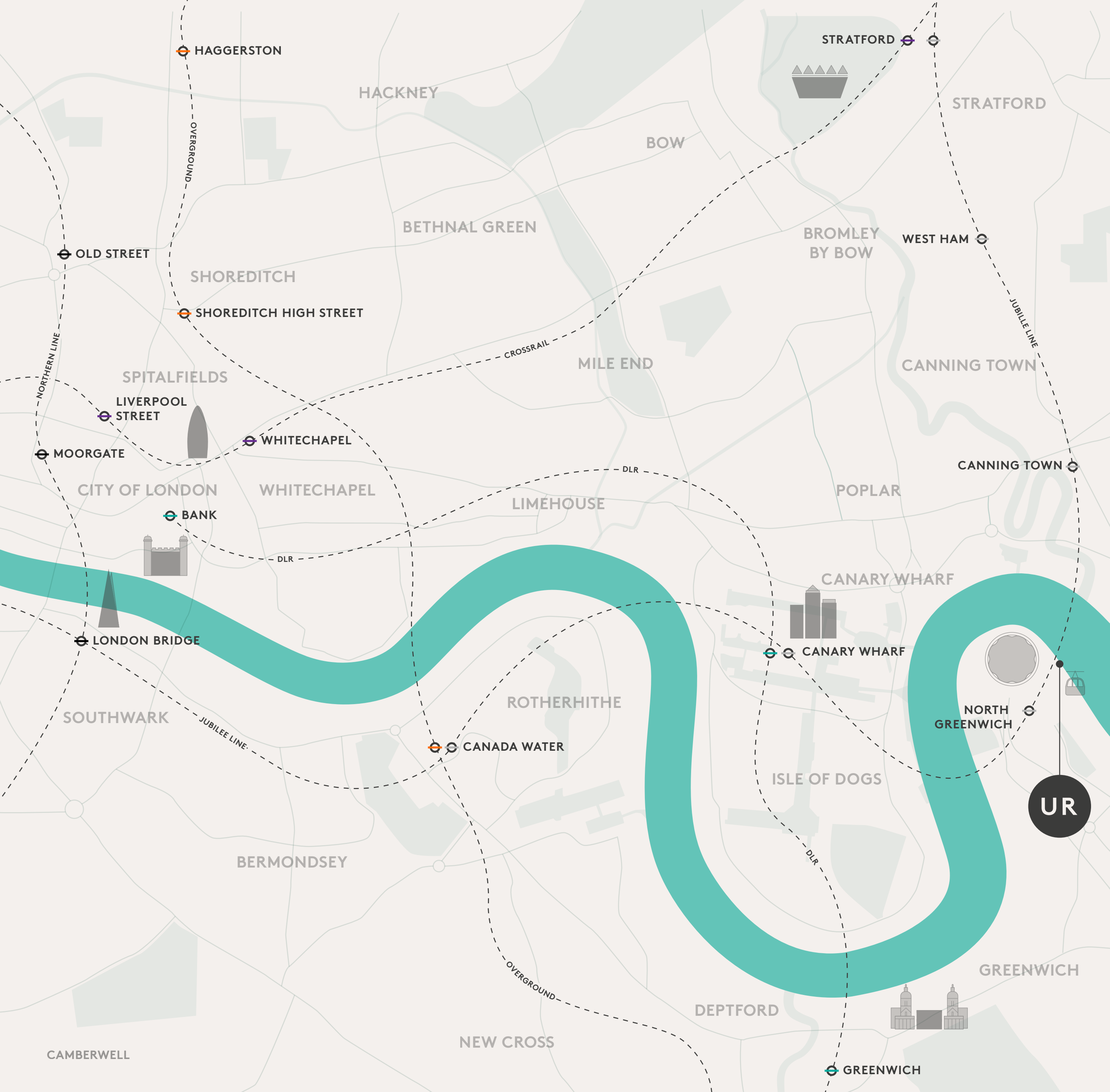


ABOVE THE CLUB, TERRACE



ABOVE THE CLUB, POOL
RIGHT THE CLUB, SPA





LONDON REDRAWN

The prime Upper Riverside location forms part of Greenwich Peninsula – a whole new community waiting to be explored. With its close proximity to Canary Wharf, Liverpool Street and Shoreditch, Greenwich Peninsula is already buzzing with must-see attractions and activities.

JUBILEE LINE	DLR	NORTHERN LINE
STRATFORD 9 mins	BANK 11 mins	CLAPHAM COMMON 12 mins
WEST HAM 5 mins	SHADWELL 7 mins	LONDON BRIDGE 8 mins via Jubilee
CANNING TOWN 2 mins	CANARY WHARF DLR 7 mins via Jubilee	MOORGATE 3 mins
NORTH GREENWICH 3 min walk	GREENWICH 11 mins	OLD STREET 5 mins
CANARY WHARF 2 mins	LONDON CITY AIRPORT 20 mins	KINGS CROSS ST PANCRAS 10 mins
CANADA WATER 4 mins	OVERGROUND	CAMDEN TOWN 15 mins
LONDON BRIDGE 8 mins	HIGHBURY + ISLINGTON 27 mins	ELIZABETH LINE
WATERLOO 11 mins	DALSTON JUNCTION 16 mins	STRATFORD 9 mins via Jubilee
WESTMINSTER 13 mins	SHOREDITCH HIGH STREET 10 mins	LIVERPOOL STREET 6 mins
GREEN PARK 15 mins	CANADA WATER 4 mins via Jubilee	PADDINGTON 17 mins
BOND STREET 17 mins	PECKHAM RYE 11 mins	HEATHROW T5 48 mins

WHAT TO DO?

This new area offers great spaces to work, relax or immerse yourself in culture. Here is a selection of our hand-picked highlights:

Design District

A creative haven full of workspaces for entrepreneurs and start-ups, coming soon.

The Tide

London’s answer to the High Line, this riverside walkway (right) is perfect for eating, drinking and strolling.

ICON outlet at The O2

A retail centre tending to all your fashion and entertainment needs.

Now Gallery

Greenwich Peninsula’s place to be for culture, events and exhibitions.

The Jetty

A green hub of creativity with sweeping views of the Thames, The Jetty hosts year-round events, riverside gardening and experiential supper clubs – and plenty more.

EXPLORE MORE





ABOVE **SAMPLE MARKET**
RIGHT **TURNING TIDES FESTIVAL**



GREENWICH PENINSULA / THE JETTY



ABOVE **DESIGN DISTRICT**

BELOW **TURNING TIDES FESTIVAL**





OUR DESIGN FEATURES

CURATED INTERIORS

Our bespoke interior concepts use light and dark palettes to ensure the signature style of No.4 always comes through.



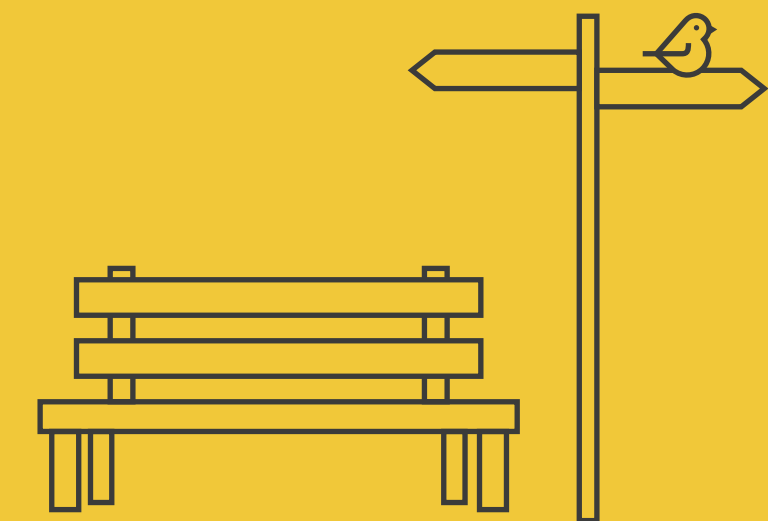
ARCHITECTURE FROM SOM

The globally renowned firm, SOM, is behind No.4's cutting-edge architecture, setting it aesthetically apart from every other rental location in London.



OUTDOOR SPACE

No.4's green spaces create unique spots for a waterfront hangout, building a riverside lifestyle that's more open, social and connected to nature.



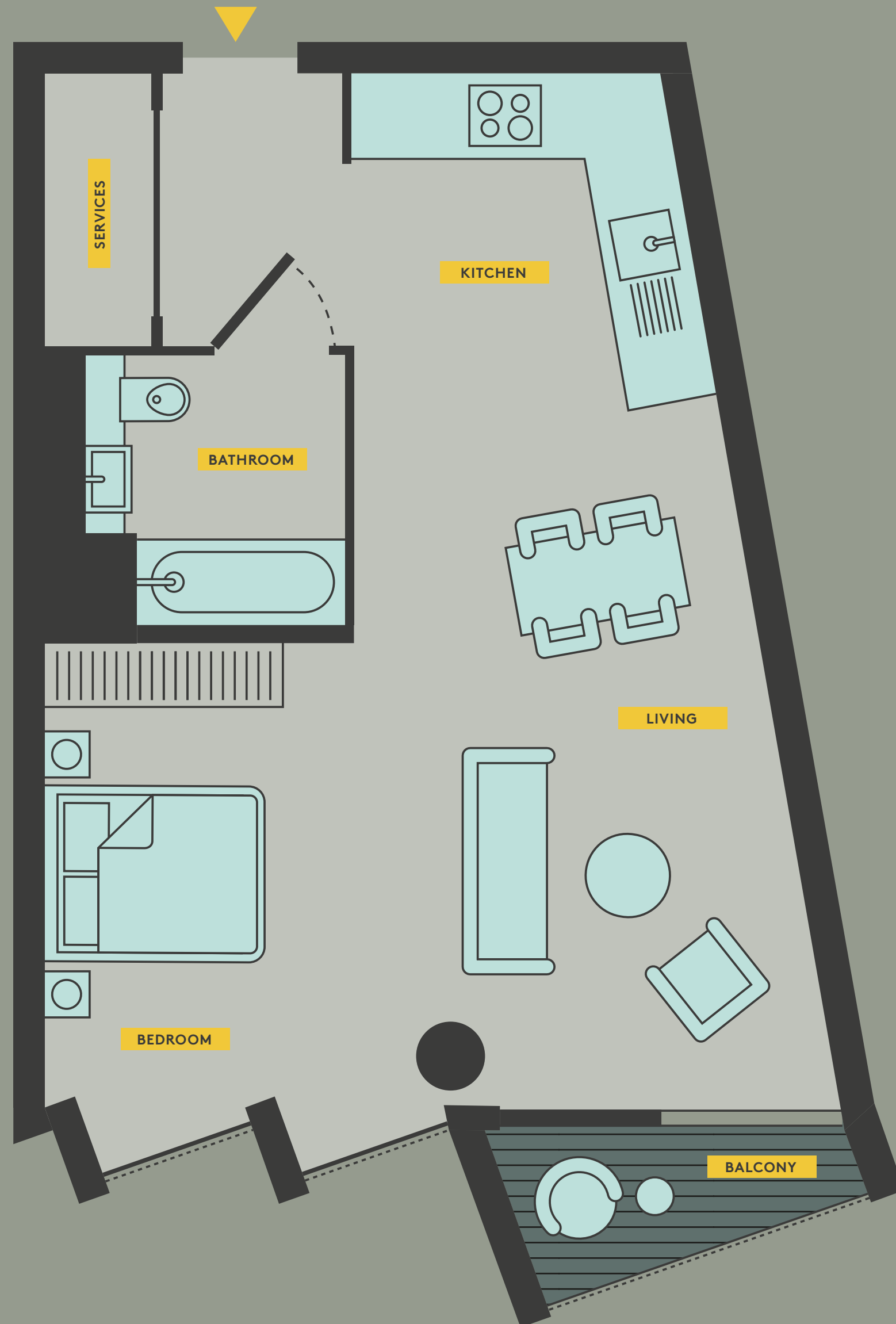


ABOVE **3 BED, LIVING**



ABOVE **2 BED, FAMILY BATHROOM**
TOP RIGHT **3 BED, KITCHEN**





NO.4

APARTMENT TYPES

Studio

1 Bedroom

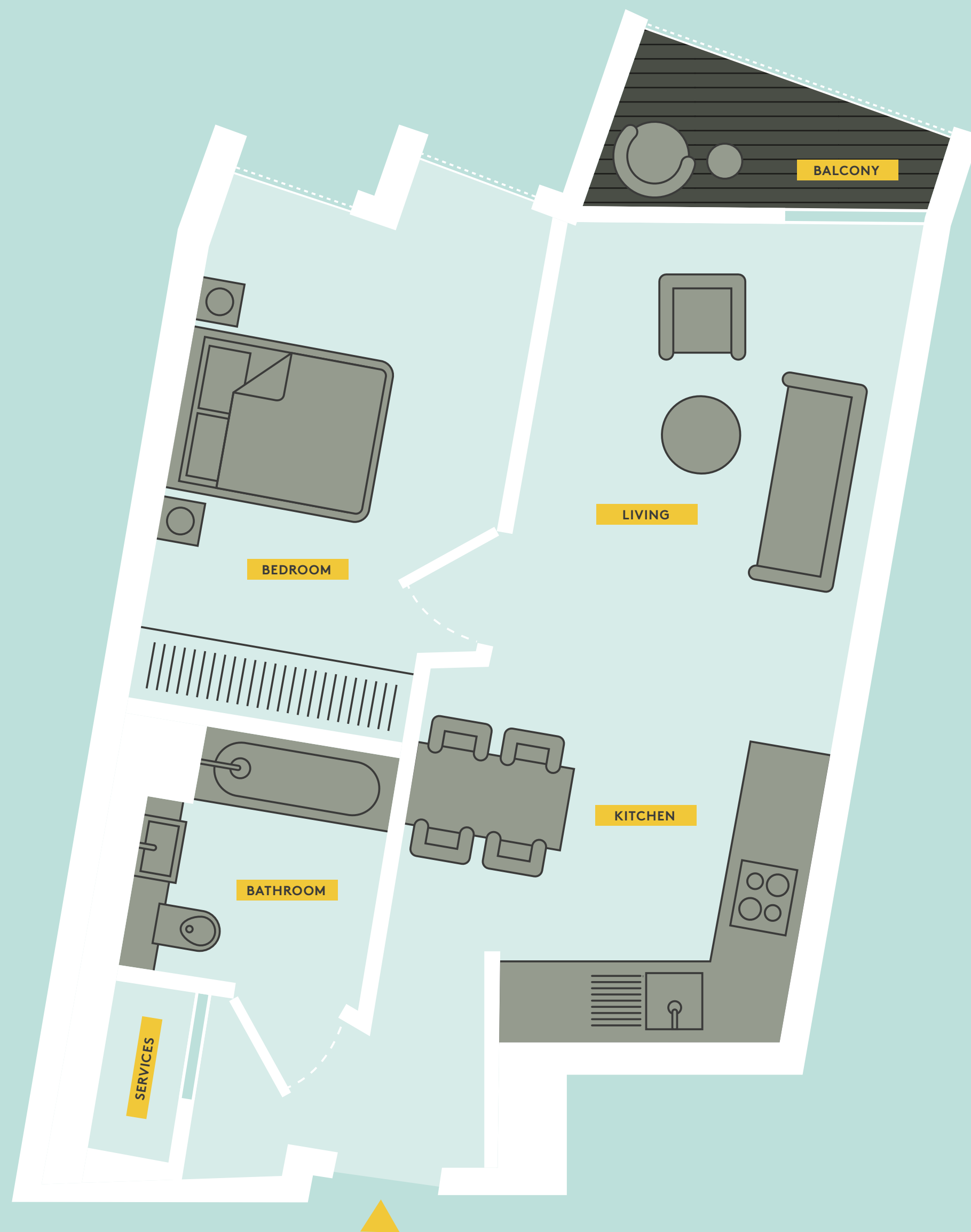
2 Bedroom

3 Bedroom

STARTING PRICES FROM £1,600 PCM

The apartments at No.4 are designed with you in mind.
The riverside views, open-plan living and curated design
mean they boast both style and substance in equal measure.

REGISTER YOUR INTEREST



NO.4

APARTMENT TYPES

Studio

1 Bedroom

2 Bedroom

3 Bedroom

STARTING PRICES FROM £1,800 PCM

The apartments at No.4 are designed with you in mind.
The riverside views, open-plan living and curated design
mean they boast both style and substance in equal measure.

REGISTER YOUR INTEREST



NO.4

APARTMENT TYPES

Studio

1 Bedroom

2 Bedroom

3 Bedroom

STARTING PRICES FROM £2,350 PCM

The apartments at No.4 are designed with you in mind.
The riverside views, open-plan living and curated design
mean they boast both style and substance in equal measure.

REGISTER YOUR INTEREST



NO.4

APARTMENT TYPES

Studio

1 Bedroom

2 Bedroom

3 Bedroom

STARTING PRICES FROM £3,000 PCM

The apartments at No.4 are designed with you in mind. The riverside views, open-plan living and curated design mean they boast both style and substance in equal measure.

REGISTER YOUR INTEREST



3 BED, LIVING



ABOVE 3 BED, BEDROOM
TOP RIGHT 2 BED, EN SUITE





HAVE WE CAUGHT YOUR EYE?

If you'd like to find out more about
the No.4 lifestyle, get in touch today.

WANT MORE?

GET IN TOUCH



LETTINGS TEAM: 020 3770 2230
lettings@greenwichpeninsula.co.uk

A development by [Knight Dragon](#)

TAKE A LOOK



[Gateway Pavilion, Peninsula Square,](#)
[Greenwich Peninsula, London SE10 0SQ](#)

upperriverside.co.uk



BACK TO TOP