



GREENWICH PENINSULA

# RENTING REFINED

Nº4 UPPER RIVERSIDE





MULTIMEDIA ROOM

# URBAN LIVING REIMAGINED

No.4 is what renting in London should be.  
It offers all the perks of homeownership,  
but with a flexibility tailored to you.



3 BED, LIVING





## HOW WE'RE REINVENTING RENTING



### **Residents' Members Club**

A pool, a gym, a rooftop terrace and a cinema screen will all become part of your day-to-day experience.



### **Managed by Greenwich Peninsula**

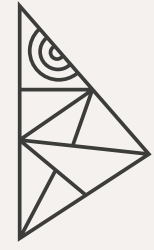
We'll make sure your home is managed properly and any bumps are smoothed before you know it. And with our flexible contracts, you're bound to find the right fit for you.



### **Pets Allowed**

We know a flat isn't a home without your pet, but renting at No.4 means they're as welcome as you are.





## Estate Management

The estate is cared for by Greenwich Peninsula. This means your local surroundings are clean and cared for.



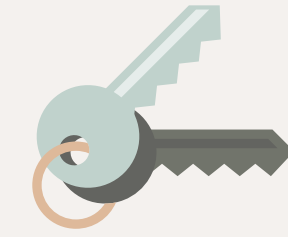
## Deposit-Free Renting

No. 4 offers you the option to pay a smaller amount upfront and reduce both the costs and stress of moving in, thanks to the Deposit Replacement Scheme. Terms apply.



## Security of Contract

No.4 will always be a Greenwich Peninsula rental offer meaning your contract is secure. Whereas a private landlord may decide to end the contract at any time.



## Parking

The No.4 lifestyle extends beyond the block itself. It also means having the freedom to go where you please – and with our onsite parking, you can hit the road whenever you like.







NO.4 UPPER RIVERSIDE, LOBBY

# RENTING REIMAGINED

## All the Essentials

Dedicated property manager  
Online application form  
Flexible contracts  
Deposit replacement scheme

## The Club Membership

Rooftop terrace  
Cinemas  
Co-working space  
Swimming Pool  
Gym  
Dining room  
Community and  
social events

## Helping Hand

Concierge  
Lifestyle manager  
Residents' portal  
Estate security  
Annual spring clean





ABOVE THE CLUB, POOL  
RIGHT THE CLUB, GYM







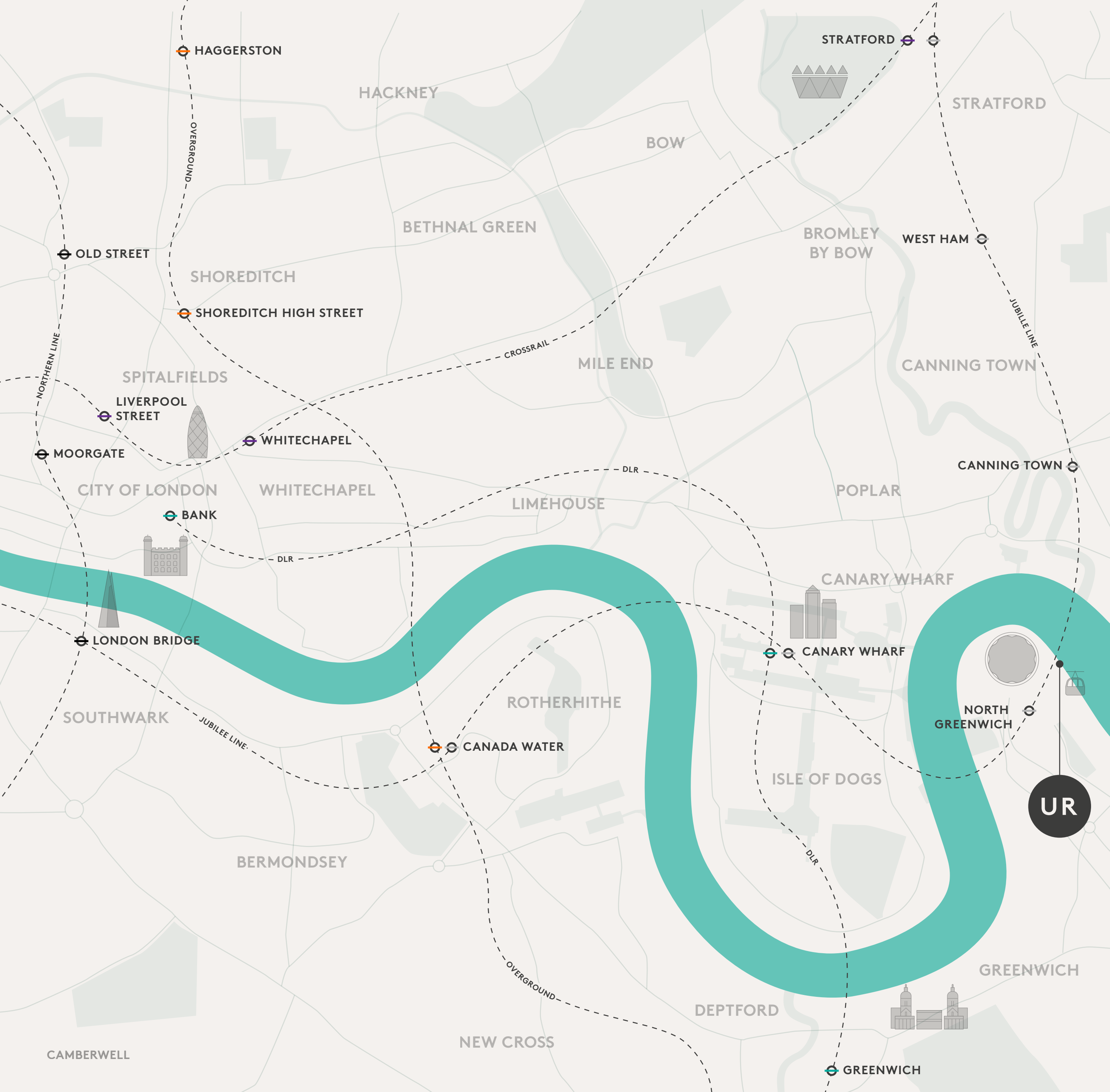
ABOVE THE CLUB, TERRACE



ABOVE THE CLUB, POOL  
RIGHT THE CLUB, SPA







# LONDON REDRAWN

The prime Upper Riverside location forms part of Greenwich Peninsula – a whole new community waiting to be explored. With its close proximity to Canary Wharf, Liverpool Street and Shoreditch, Greenwich Peninsula is already buzzing with must-see attractions and activities.

## JUBILEE LINE

- STRATFORD  
9 mins
- WEST HAM  
5 mins
- CANNING TOWN  
2 mins
- NORTH GREENWICH  
3 min walk
- CANARY WHARF  
2 mins
- CANADA WATER  
4 mins
- LONDON BRIDGE  
8 mins
- WATERLOO  
11 mins
- WESTMINSTER  
13 mins
- GREEN PARK  
15 mins
- BOND STREET  
17 mins

## DLR

- BANK  
11 mins
- SHADWELL  
7 mins
- CANARY WHARF DLR  
7 mins via Jubilee
- GREENWICH  
11 mins
- LONDON CITY AIRPORT  
20 mins
- OVERGROUND
- Highbury + Islington  
27 mins
- DALSTON JUNCTION  
16 mins
- SHOREDITCH HIGH STREET  
10 mins
- CANADA WATER  
4 mins via Jubilee
- PECKHAM RYE  
11 mins

## NORTHERN LINE

- CLAPHAM COMMON  
12 mins
- LONDON BRIDGE  
8 mins via Jubilee
- MOORGATE  
3 mins
- OLD STREET  
5 mins
- KINGS CROSS ST PANCRAS  
10 mins
- CAMDEN TOWN  
15 mins
- ELIZABETH LINE
- STRATFORD  
9 mins via Jubilee
- LIVERPOOL STREET  
6 mins
- PADDINGTON  
17 mins
- HEATHROW T5  
48 mins



# WHAT TO DO?

This new area offers great spaces to work, relax or immerse yourself in culture. Here is a selection of our hand-picked highlights:

## Design District

A creative haven full of workspaces for entrepreneurs and start-ups, coming soon.

## The Tide

London's answer to the High Line, this riverside walkway (right) is perfect for eating, drinking and strolling.

## ICON outlet at The O2

A retail centre tending to all your fashion and entertainment needs.

## Now Gallery

Greenwich Peninsula's place to be for culture, events and exhibitions.

## The Jetty

A green hub of creativity with sweeping views of the Thames, The Jetty hosts year-round events, riverside gardening and experiential supper clubs – and plenty more.







ABOVE **SAMPLE MARKET**  
RIGHT **TURNING TIDES FESTIVAL**



GREENWICH PENINSULA / THE JETTY





ABOVE **DESIGN DISTRICT**

BELOW **TURNING TIDES FESTIVAL**





# OUR DESIGN FEATURES

## CURATED INTERIORS

Our bespoke interior concepts use light and dark palettes to ensure the signature style of No.4 always comes through.



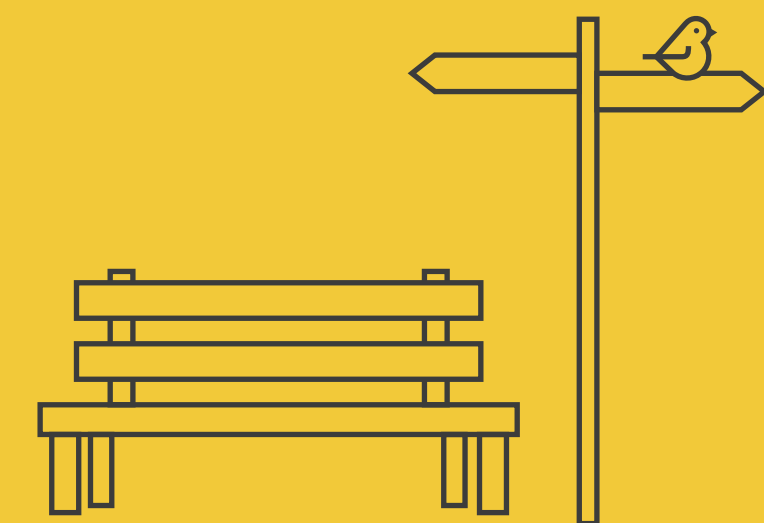
## ARCHITECTURE FROM SOM

The globally renowned firm, SOM, is behind No.4's cutting-edge architecture, setting it aesthetically apart from every other rental location in London.



## OUTDOOR SPACE

No.4's green spaces create unique spots for a waterfront hangout, building a riverside lifestyle that's more open, social and connected to nature.







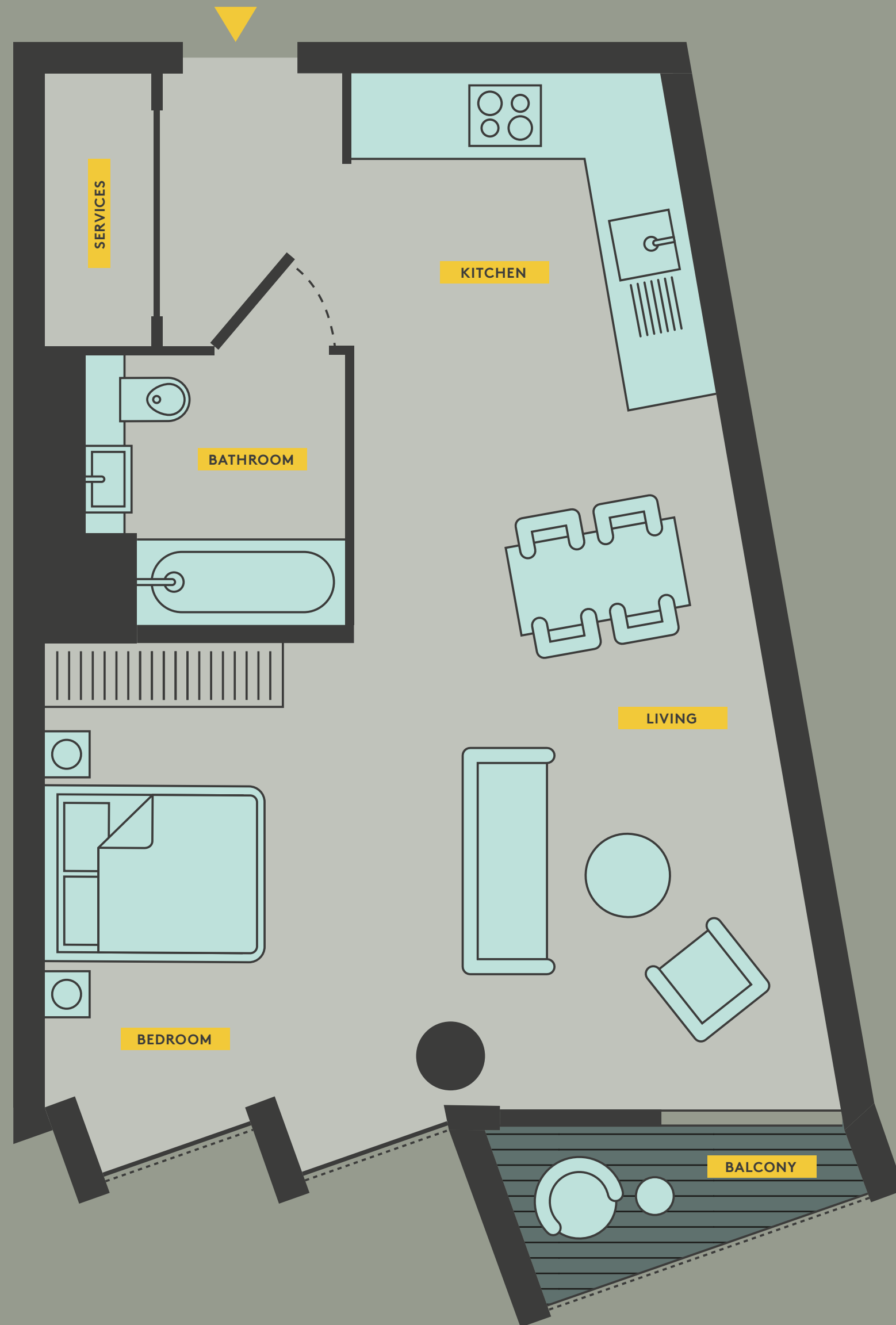
ABOVE **3 BED, LIVING**



ABOVE **FAMILY BATHROOM**  
TOP RIGHT **KITCHEN**







NO.4

## APARTMENT TYPES

Studio

1 Bedroom

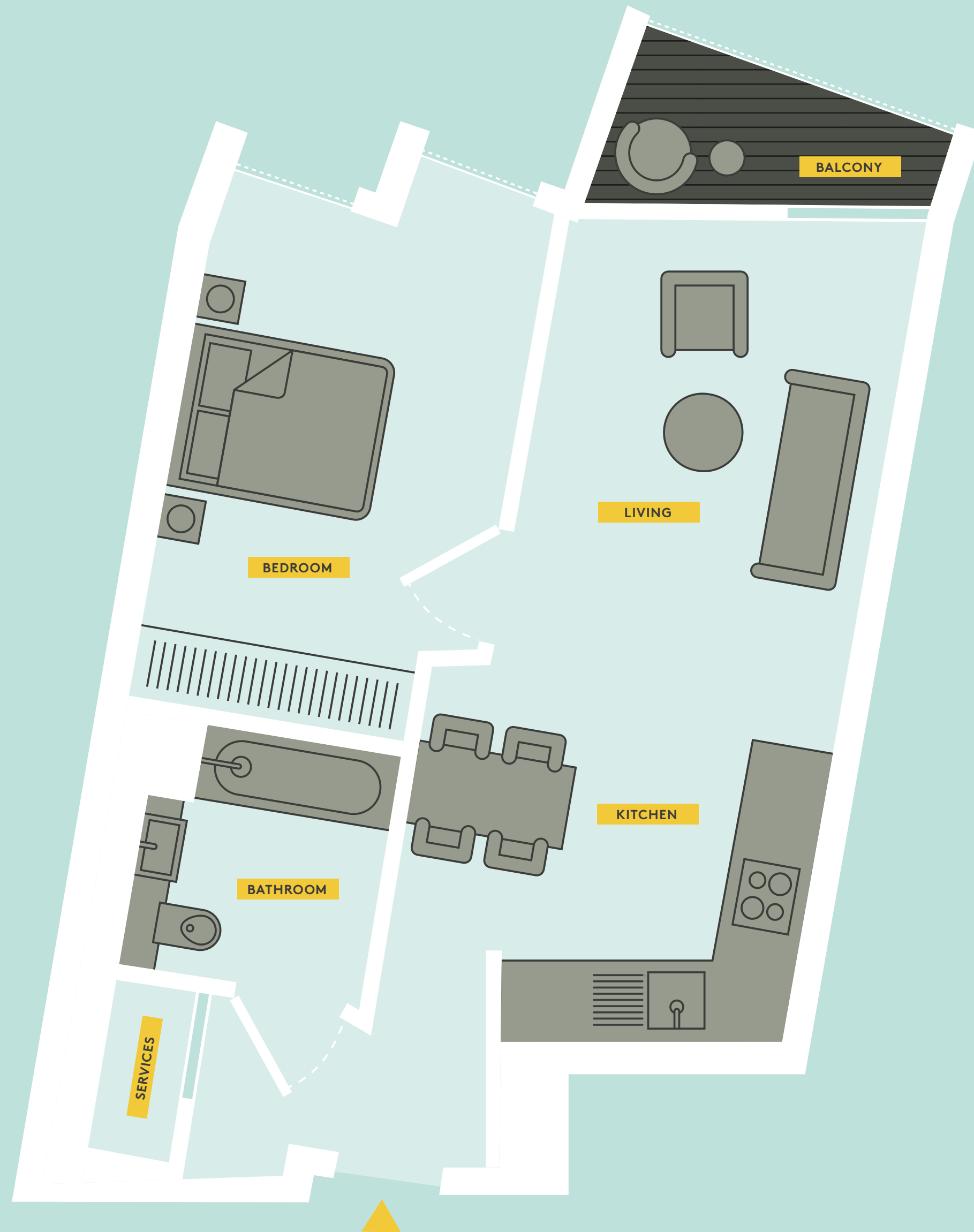
2 Bedroom

3 Bedroom

**STARTING PRICES FROM £1,600 PCM**

The apartments at No.4 are designed with you in mind.  
The riverside views, open-plan living and curated design  
mean they boast both style and substance in equal measure.





NO.4

## APARTMENT TYPES

*Studio*

*1 Bedroom*

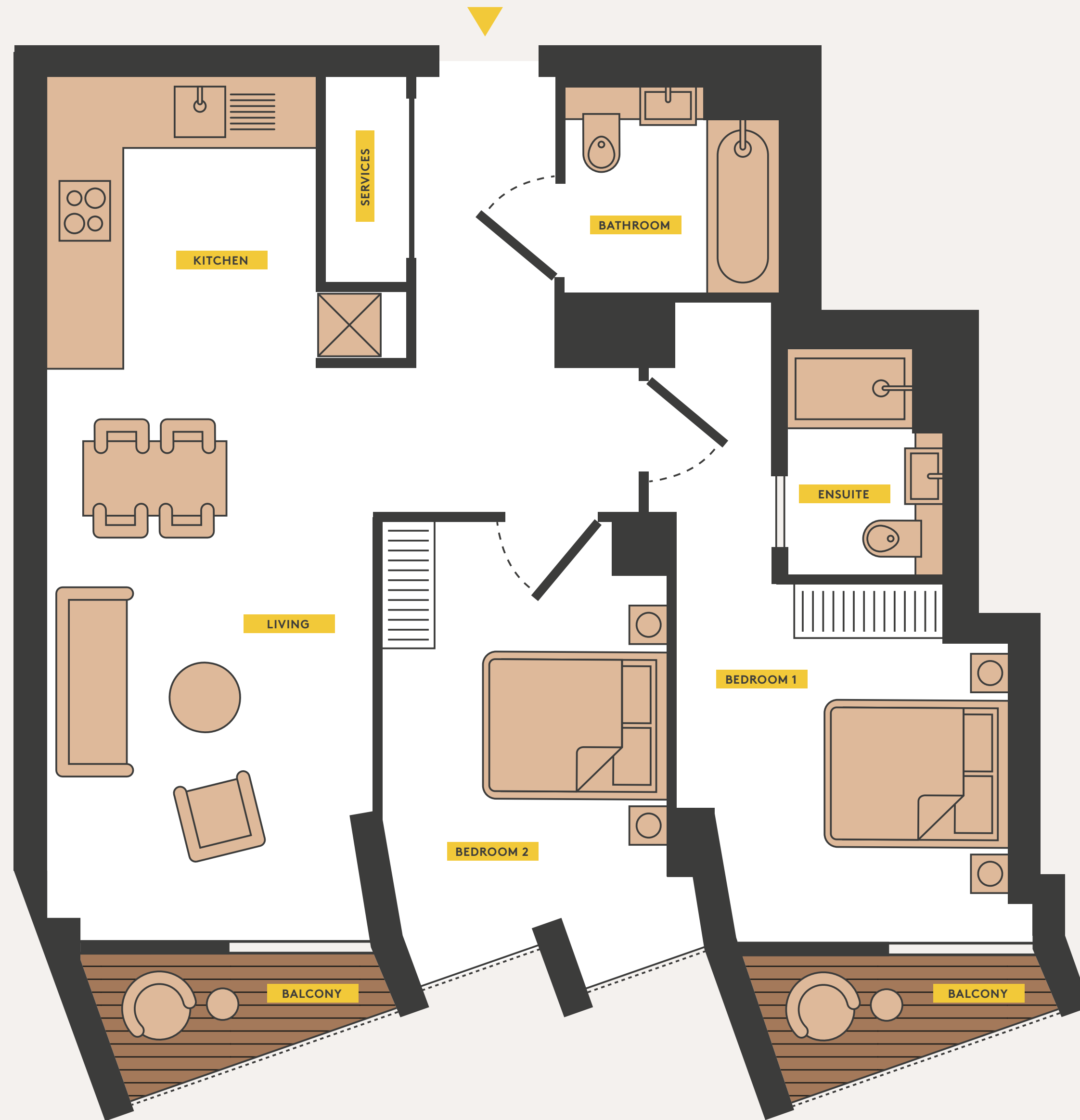
*2 Bedroom*

*3 Bedroom*

**STARTING PRICES FROM £1,800 PCM**

The apartments at No.4 are designed with you in mind.  
The riverside views, open-plan living and curated design  
mean they boast both style and substance in equal measure.





NO.4

## APARTMENT TYPES

*Studio*

*1 Bedroom*

*2 Bedroom*

*3 Bedroom*

**STARTING PRICES FROM £2,350 PCM**

The apartments at No.4 are designed with you in mind.  
The riverside views, open-plan living and curated design  
mean they boast both style and substance in equal measure.





NO.4

## APARTMENT TYPES

*Studio*

*1 Bedroom*

*2 Bedroom*

*3 Bedroom*

**STARTING PRICES FROM £3,000 PCM**

The apartments at No.4 are designed with you in mind.  
The riverside views, open-plan living and curated design  
mean they boast both style and substance in equal measure.





1 BED, LOFT LIVING



ABOVE **MASTER BEDROOM**  
TOP RIGHT **EN SUITE**







# HAVE WE CAUGHT YOUR EYE?

If you'd like to find out more about  
the No.4 lifestyle, get in touch today.